

TM Site:

Description:

15-085NS

ROUTE 101, 0.80 km SOUTH OF PORT MELLON HWY., JUST OUTSIDE THE FERRY GATE, LANGDALE

Station: 65140S

Survey: 6514

▲ - Short Count Post

□ - TRADAS Traffic Measurement Site

■ - Loops

① - Channels

■ - Junction Box

A - Detectors

PHOTOLOG

YEAR: 2000

HIGHWAY: H101

IMAGE NUMBER: 13816

SHOWS LOOPS:

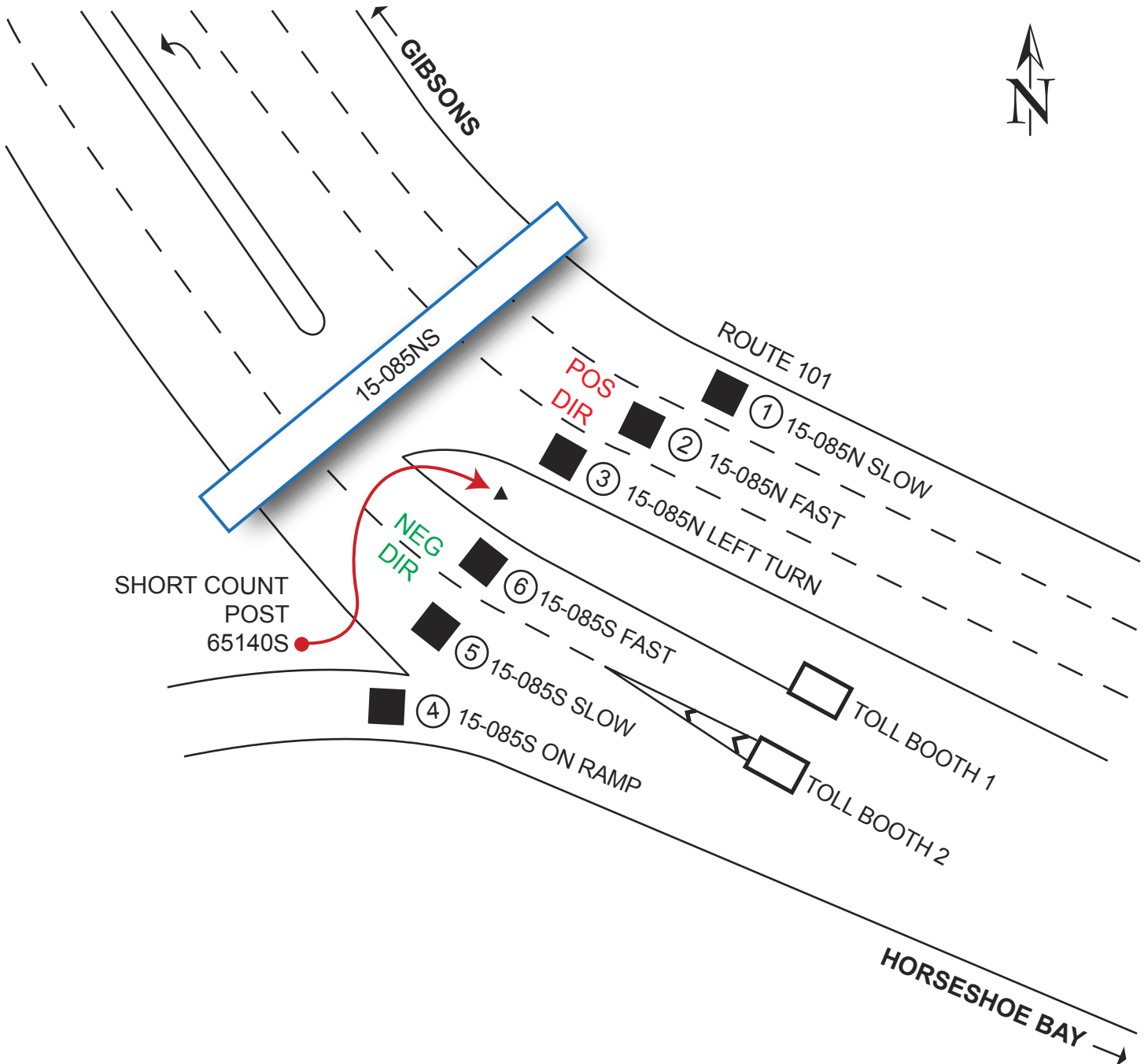
YES

NO

GPS: N 49° 26'2.7"

W 123° 28'42.9"

± 200 metres



NOT TO SCALE

Highway Planning Branch
TRANHighway Planning@gov.bc.ca

Revised Date: May / 2006
Version 1-A