

TM Site:

Description:

17-056E

ROUTE 1, 1.15 km WEST OF PREST ROAD, CHILLIWACK

17-056W

ROUTE 1, 1.15 km WEST OF PREST ROAD, CHILLIWACK

Station: 64040S

64041S

Survey: 6404

▲ - Short Count Post

□ - TRADAS Traffic Measurement Site

■ - Loops

① - Channels

■ - Junction Box

A - Detectors

PHOTOLOG

YEAR: 2005

HIGHWAY: H1E

IMAGE NUMBER: 3047

SHOWS LOOPS:

YES

NO

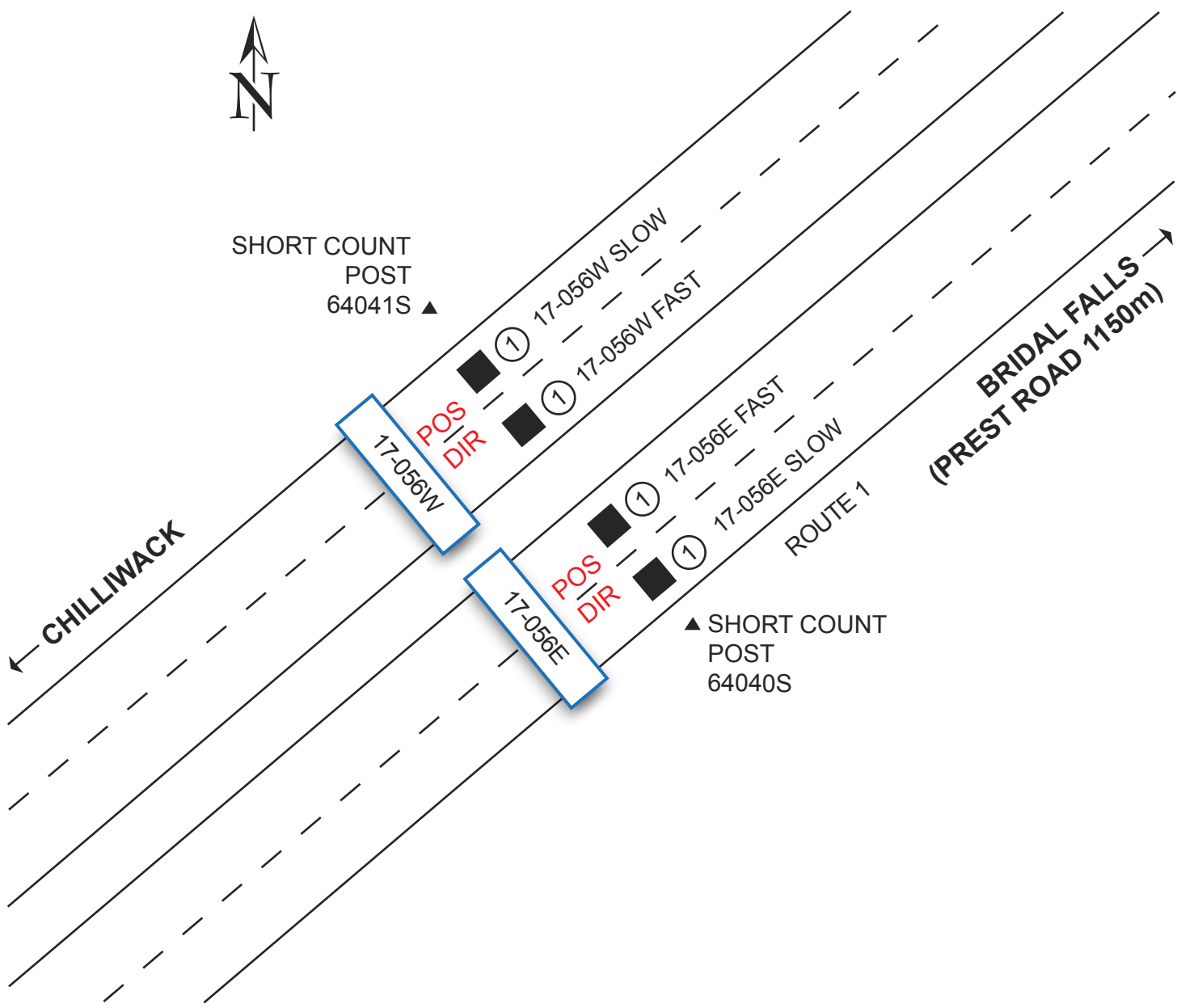
GPS: N 49° 9'6.9"

W 121° 55'58.8"

± 200 metres



SHORT COUNT
POST
64041S ▲



NOT TO SCALE

Highway Planning Branch
TRANHighway Planning@gov.bc.ca

Revised Date: December / 2006
Version 1-A