

TM Site:

Description:

16-044NS

ROUTE 17, 0.7 km SOUTH OF 56 STREET, DELTA

Station: 60200S

Survey: 6020

▲ - Short Count Post

□ - TRADAS Traffic Measurement Site

■ - Loops

① - Channels

■ - Junction Box

A - Detectors

PHOTOLOG

YEAR: 2005

HIGHWAY: H17N

IMAGE NUMBER: 516

SHOWS LOOPS:

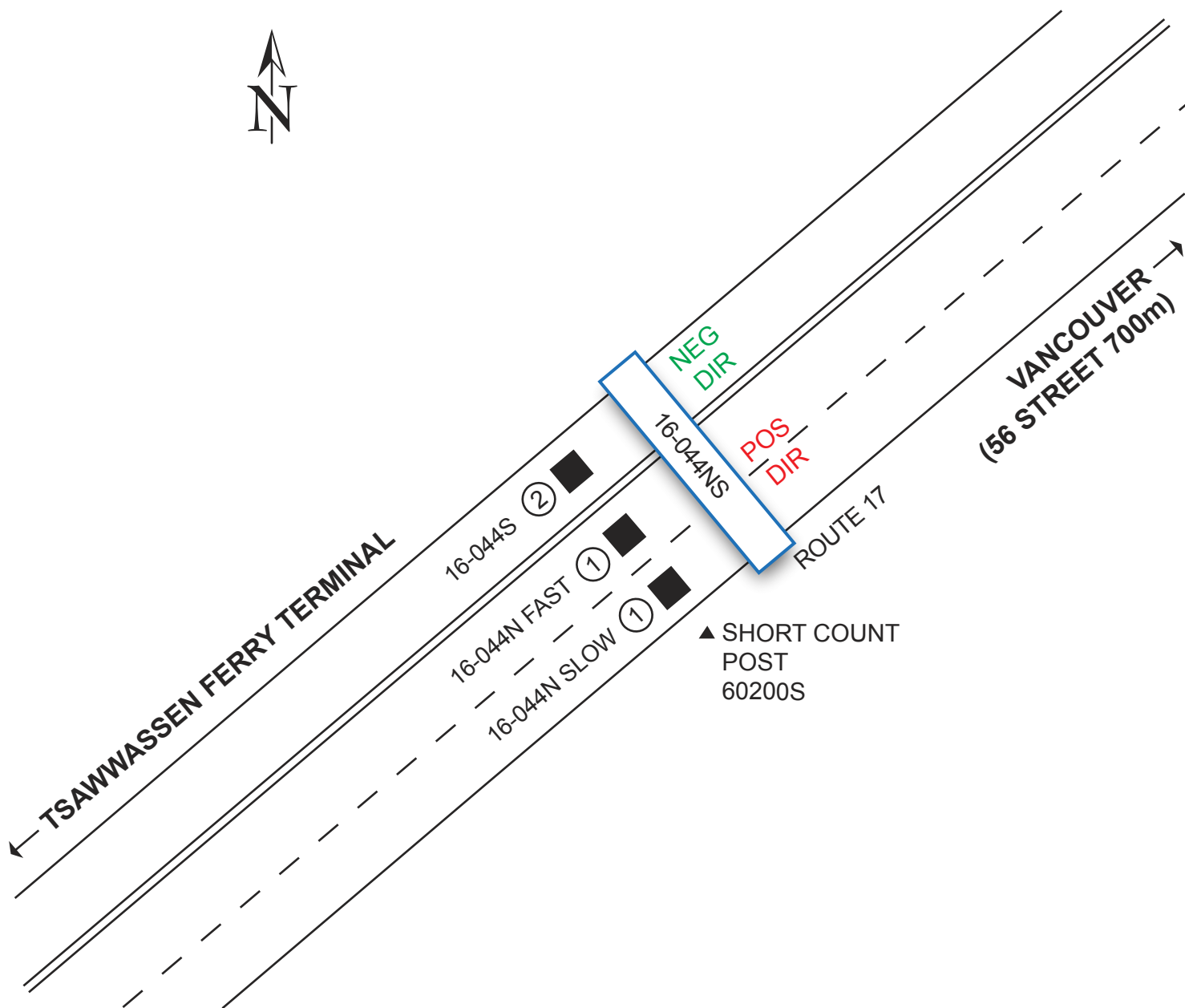
YES

NO

GPS: N 49° 2'20.6"

W 123° 4'35.3"

± 200 metres



NOT TO SCALE

Highway Planning Branch
TRANHighway Planning@gov.bc.ca

Revised Date: February / 2007
Version 1-A