

TM Site:

Description:

11-047N

ROUTE 1, 0.2 km SOUTH OF ROUTE 1A (GOLDSTREAM AVENUE), LANGFORD

11-047S

ROUTE 1, 0.2 km SOUTH OF ROUTE 1A (GOLDSTREAM AVENUE), LANGFORD

Station: 55190S

Survey: 5519

▲ - Short Count Post

□ - TRADAS Traffic Measurement Site

■ - Loops

① - Channels

■ - Junction Box

A - Detectors

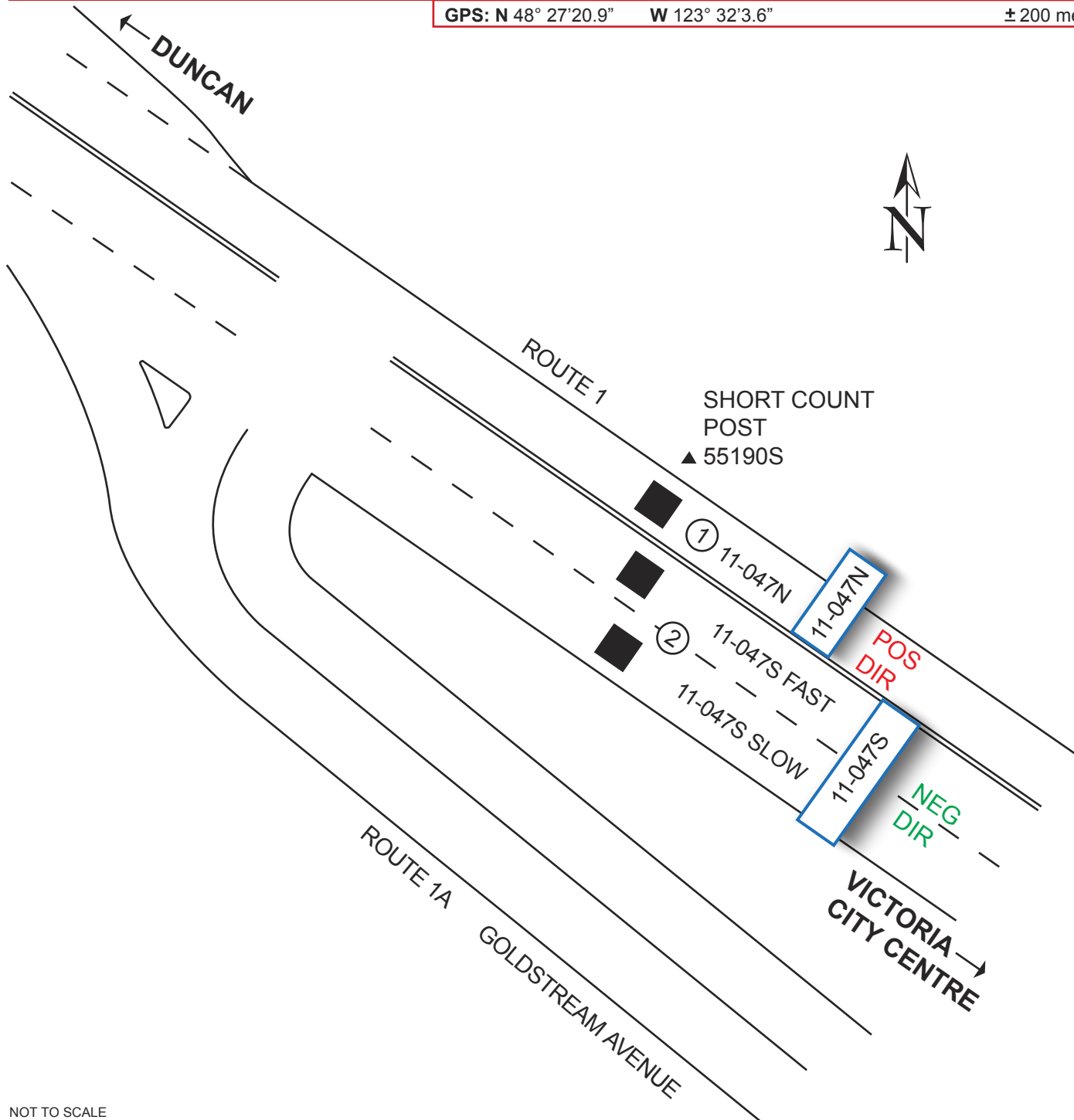
PHOTOLOG

YEAR: 1999
HIGHWAY: H1
IMAGE NUMBER: 1710
SHOWS LOOPS:
 YES NO

GPS: N 48° 27'20.9"

W 123° 32'3.6"

± 200 metres



NOT TO SCALE

Highway Planning Branch
TRANHighway Planning@gov.bc.ca

Revised Date: February / 2006
Version 2-A