

**TM Site:**

**Description:**

P-14-5NS  
14-058NS

ROUTE 19 (INLAND ISL. HWY), 0.5 km SOUTH OF BUCKLEY BAY MAIN ROAD, BUCKLEY BAY  
ROUTE 19 (INLAND ISL. HWY), 0.5 km NORTH OF BUCKLEY BAY MAIN ROAD, BUCKLEY BAY

**Station:** 51660P

**Name:** BUCKLEY BAY

**Survey:** 5166

▲ - Short Count Post

■ - Loops

■ - Cabinet

■ - Junction Box

□ - TRADAS Traffic Measurement Site

① - Channels

A - Detectors

**PHOTOLOG**

YEAR: 1999

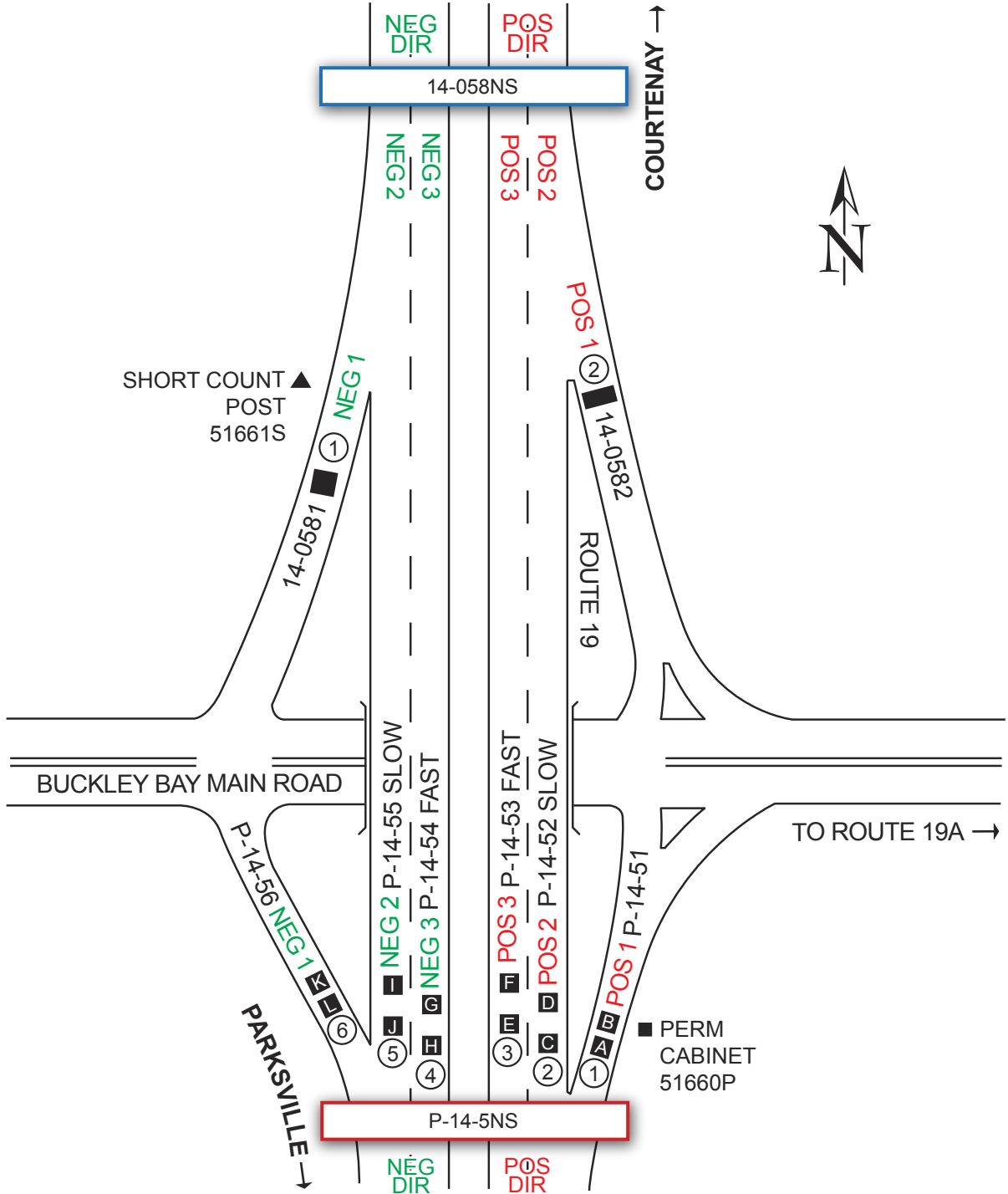
HIGHWAY: H19

IMAGE NUMBER: 10961

SHOWS LOOPS:

YES

NO



NOT TO SCALE

Highway Planning Branch  
TRANHighway Planning@gov.bc.ca

Revised Date: October / 2005  
Version 5-A