

TM Site: Description:

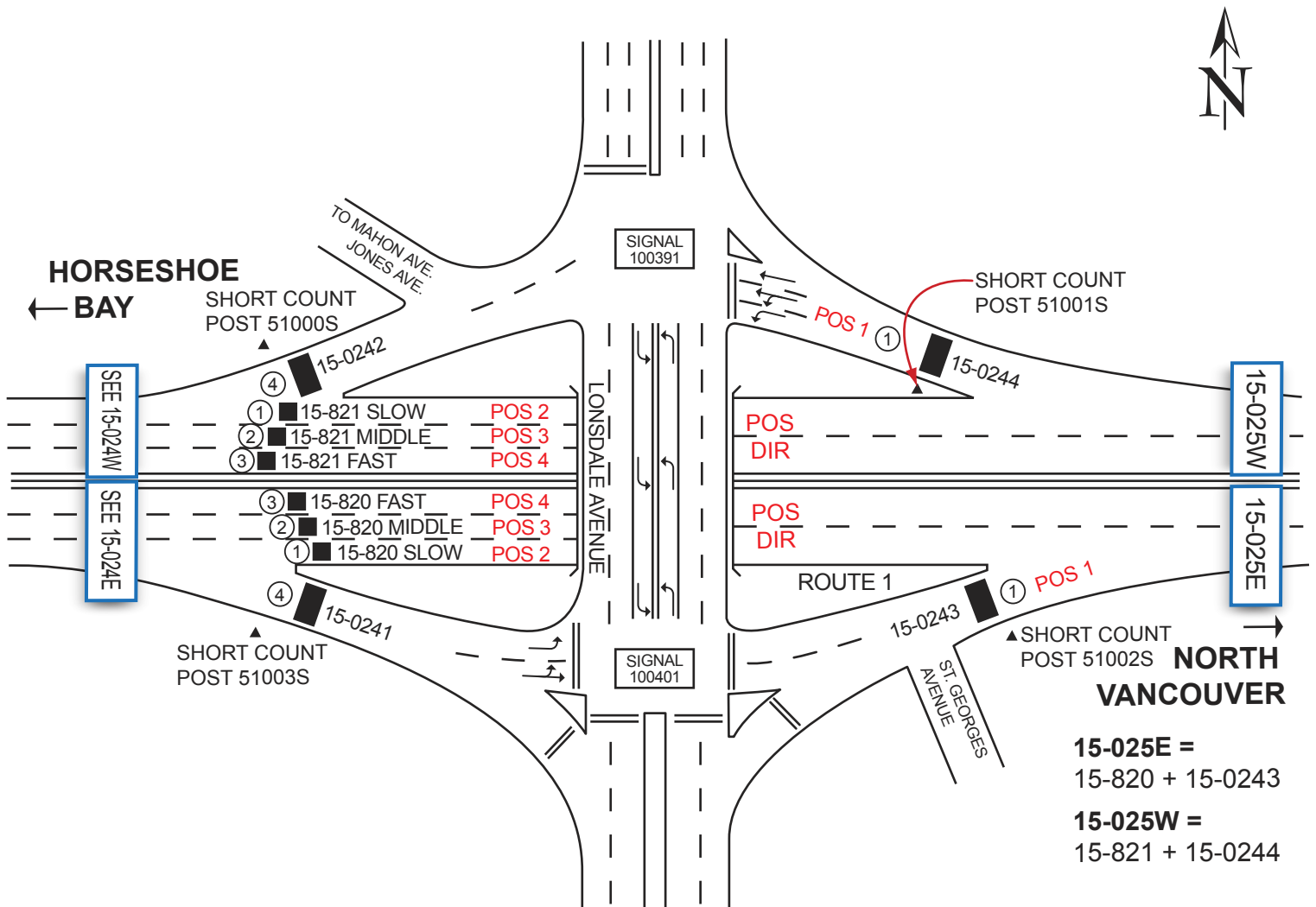
15-025E ROUTE 1, BETWEEN LONSDALE I/C AND ST. ANDREWS AVENUE , NORTH VANCOUVER (LONSDALE I/C) (COMP)
15-025W ROUTE 1, BETWEEN LONSDALE I/C AND ST. ANDREWS AVENUE , NORTH VANCOUVER (LONSDALE I/C) (COMP)

Station: 51002S 51001S
 51003S 51000S
Survey: 5100

- ▲ - Short Count Post
- - Loops
- - Junction Box
- - TRADAS Traffic Measurement Site
- ① - Channels
- A - Detectors

PHOTOLOG
 YEAR: 2000
 HIGHWAY: H1RP2
 IMAGE NUMBER: 11071
 SHOWS LOOPS:
 YES NO

GPS: N 49° 19'55.2" W 123° 4'3.3" ± 200 metres



15-025E =
 15-820 + 15-0243
15-025W =
 15-821 + 15-0244

NOT TO SCALE