

TM Site:

Description:

17-024E

ROUTE 1, 0.5 km WEST OF McCALLUM ROAD I/C, ABBOTSFORD
(McCALLUM ROAD I/C) (COMP)

17-024W

ROUTE 1, 0.5 km WEST OF McCALLUM ROAD I/C, ABBOTSFORD
(McCALLUM ROAD I/C) (COMP)

Station: 50501S

50502S 50504S

Survey: 5050

▲ - Short Count Post

□ - TRADAS Traffic Measurement Site

■ - Loops

① - Channels

■ - Junction Box

A - Detectors

PHOTOLOG

YEAR: 2005

HIGHWAY: H1

IMAGE NUMBER: 432

SHOWS LOOPS:

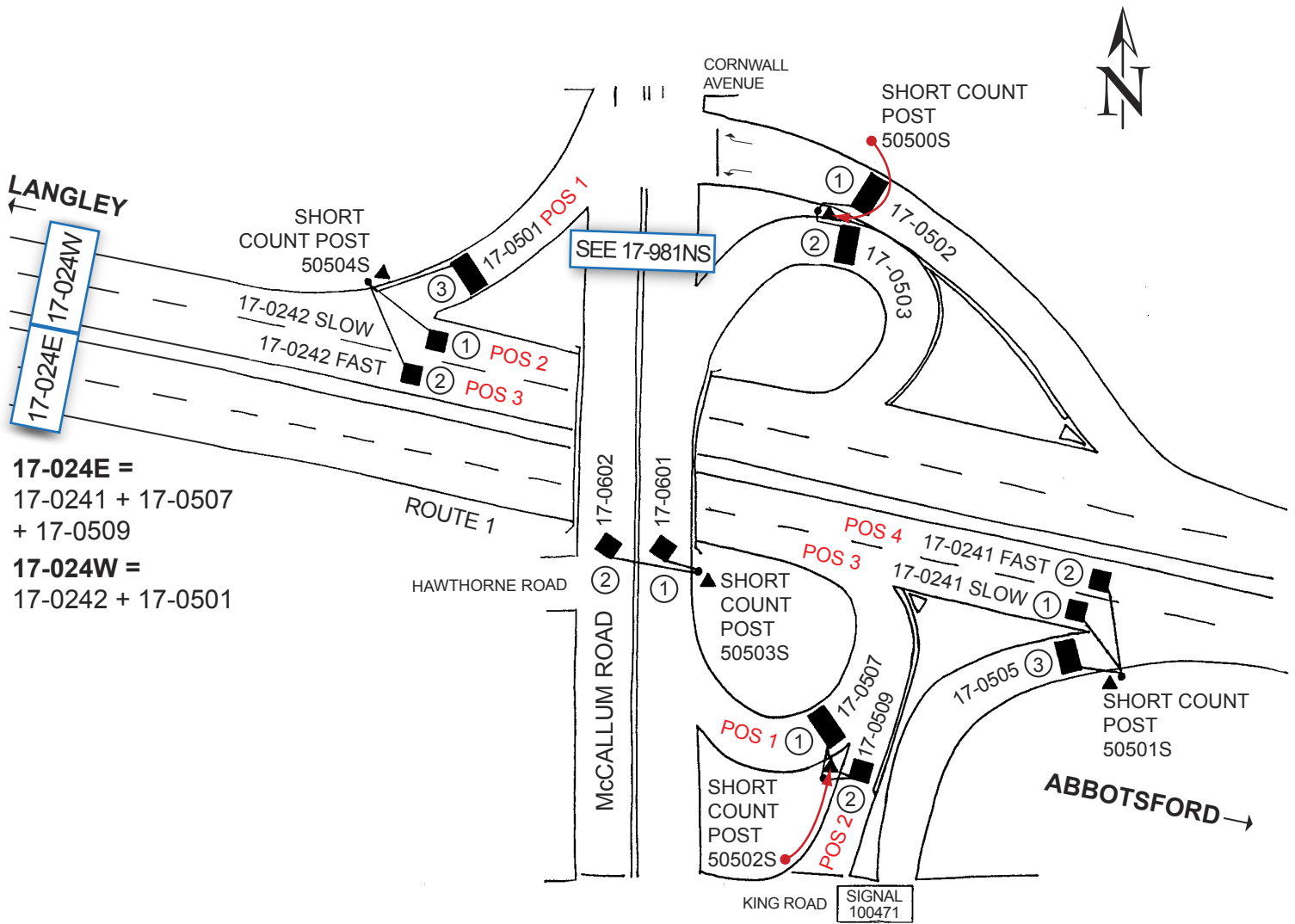
YES

NO

GPS: N 49° 2'5.6"

W 122° 18'0.2"

± 200 metres



17-024E =
17-0241 + 17-0507
+ 17-0509

17-024W =
17-0242 + 17-0501

NOT TO SCALE

Highway Planning Branch
TRANHighway Planning@gov.bc.ca

Revised Date: November / 2006
Version 1-A