

TM Site:

Description:

16-165N

ROUTE 99, 600m NORTH OF ROUTE 99A, SURREY (COMPOSITE - KING GEORGE HWY I/C)

16-165S

ROUTE 99, 500m NORTH OF ROUTE 99A, SURREY (COMPOSITE - KING GEORGE HWY I/C)

Station: 50394S 50391S

50393S

Survey: 5039

▲ - Short Count Post

□ - TRADAS Traffic Measurement Site

■ - Loops

① - Channels

■ - Junction Box

A - Detectors

PHOTOLOG

YEAR: 2005

HIGHWAY: H99S

IMAGE NUMBER: 3088

SHOWS LOOPS:

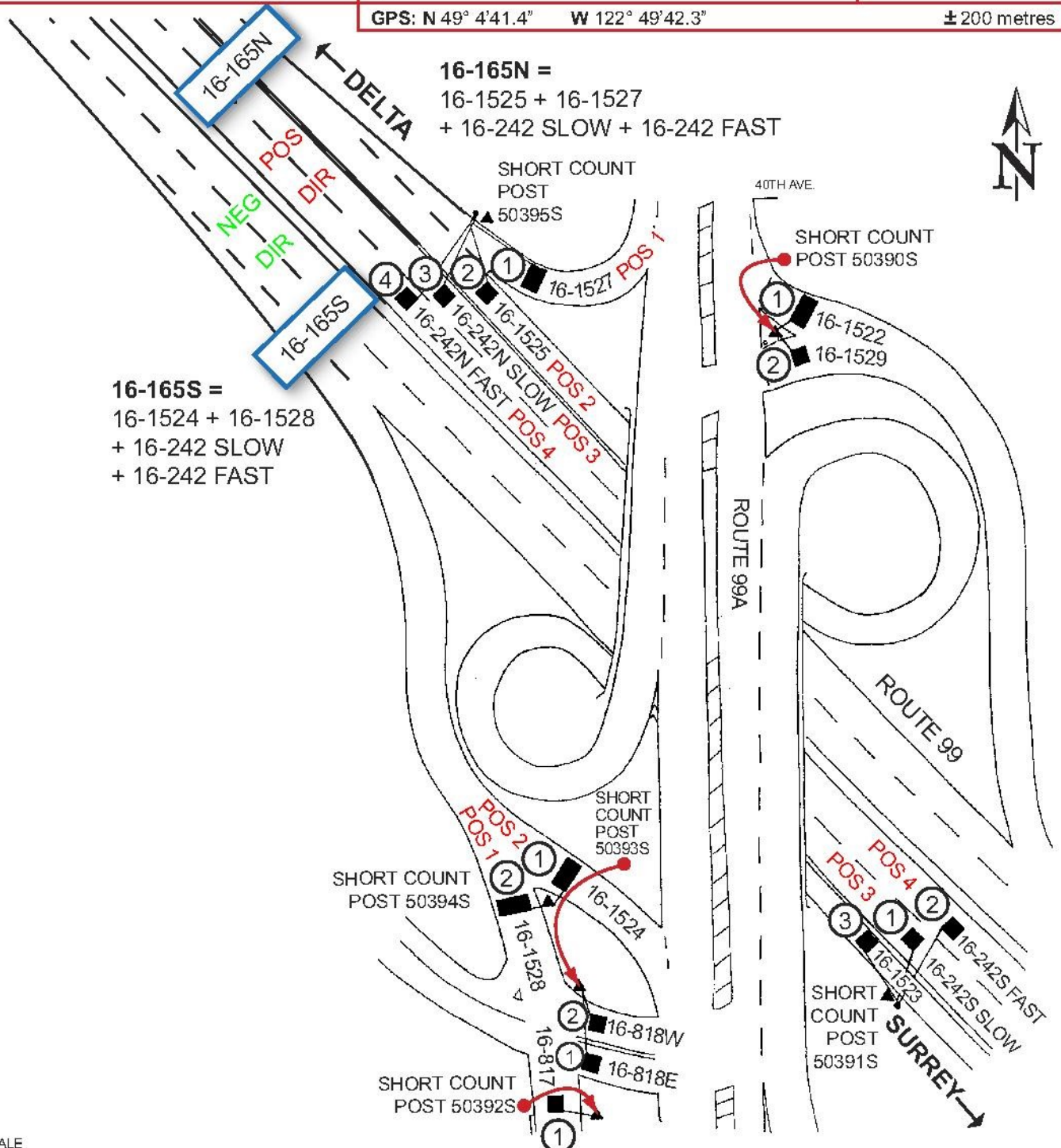
YES

NO

GPS: N 49° 4'41.4"

W 122° 49'42.3"

± 200 metres



NOT TO SCALE