

TM Site: Description:

17-001E ROUTE 1, 0.2 km WEST OF ROUTE 9, BRIDAL FALLS (COMP)

17-001W ROUTE 1, 0.2 km WEST OF ROUTE 9, BRIDAL FALLS (COMP)

Station: 50180S

Survey: 5018

▲ - Short Count Post

□ - TRADAS Traffic Measurement Site

■ - Loops

① - Channels

■ - Junction Box

A - Detectors

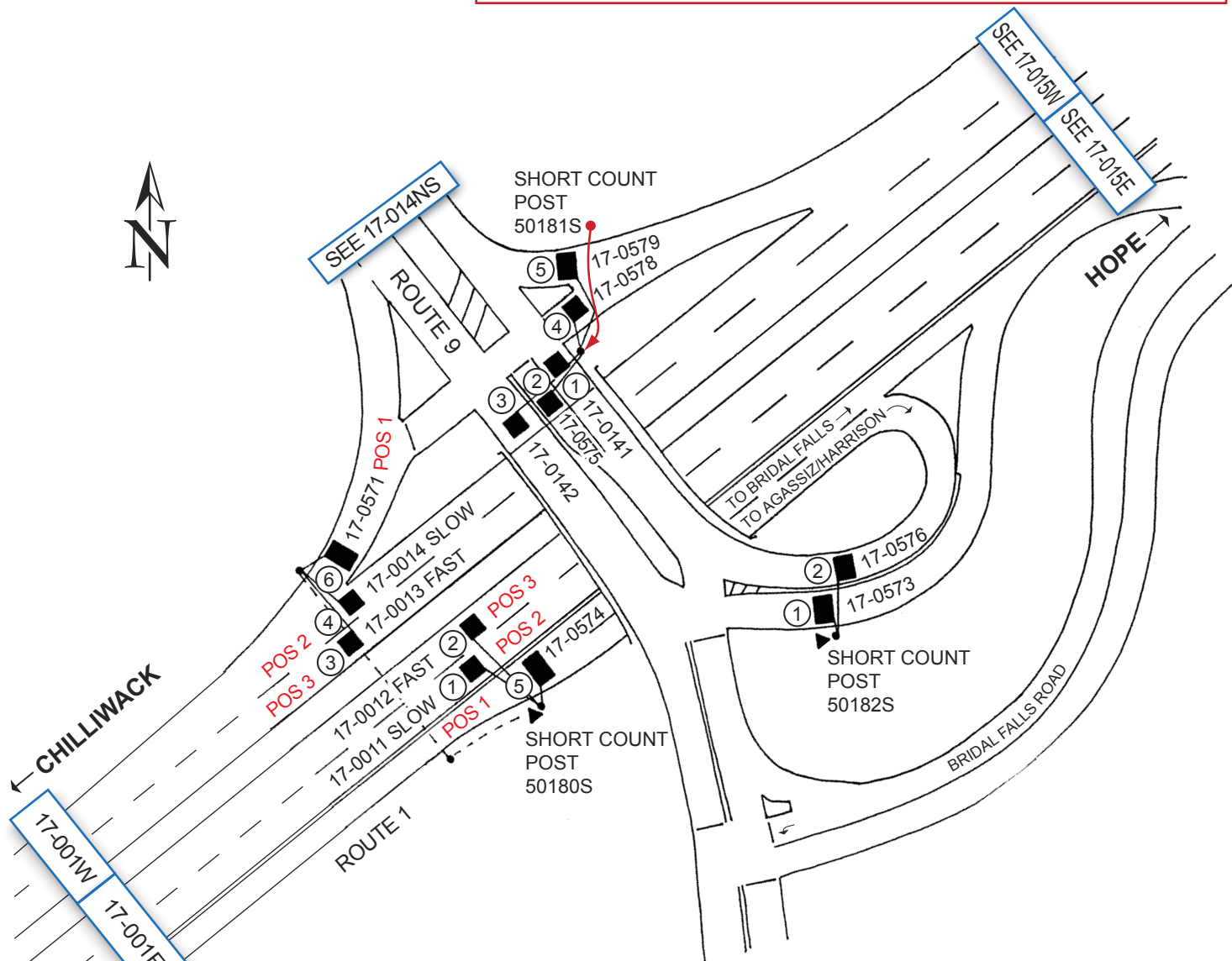
PHOTOLOG

YEAR: 2005
 HIGHWAY: H1W
 IMAGE NUMBER: 95
 SHOWS LOOPS:
 YES NO

GPS: N 49.1794

W -121.7649

± 200 metres



17-001E =
 17-0011 + 17-0012
 + 17-0574
17-001W =
 17-0013 + 17-0014
 + 17-0571

NOT TO SCALE