

TM Site:

Description:

16-069E

ROUTE 1, 1.3 km EAST OF ROUTE 10 (232 STREET), LANGLEY (264 STREET I/C) (COMP)

Station: 50090S 50091S

50092S

Survey: 5009

▲ - Short Count Post

□ - TRADAS Traffic Measurement Site

■ - Loops

① - Channels

■ - Junction Box

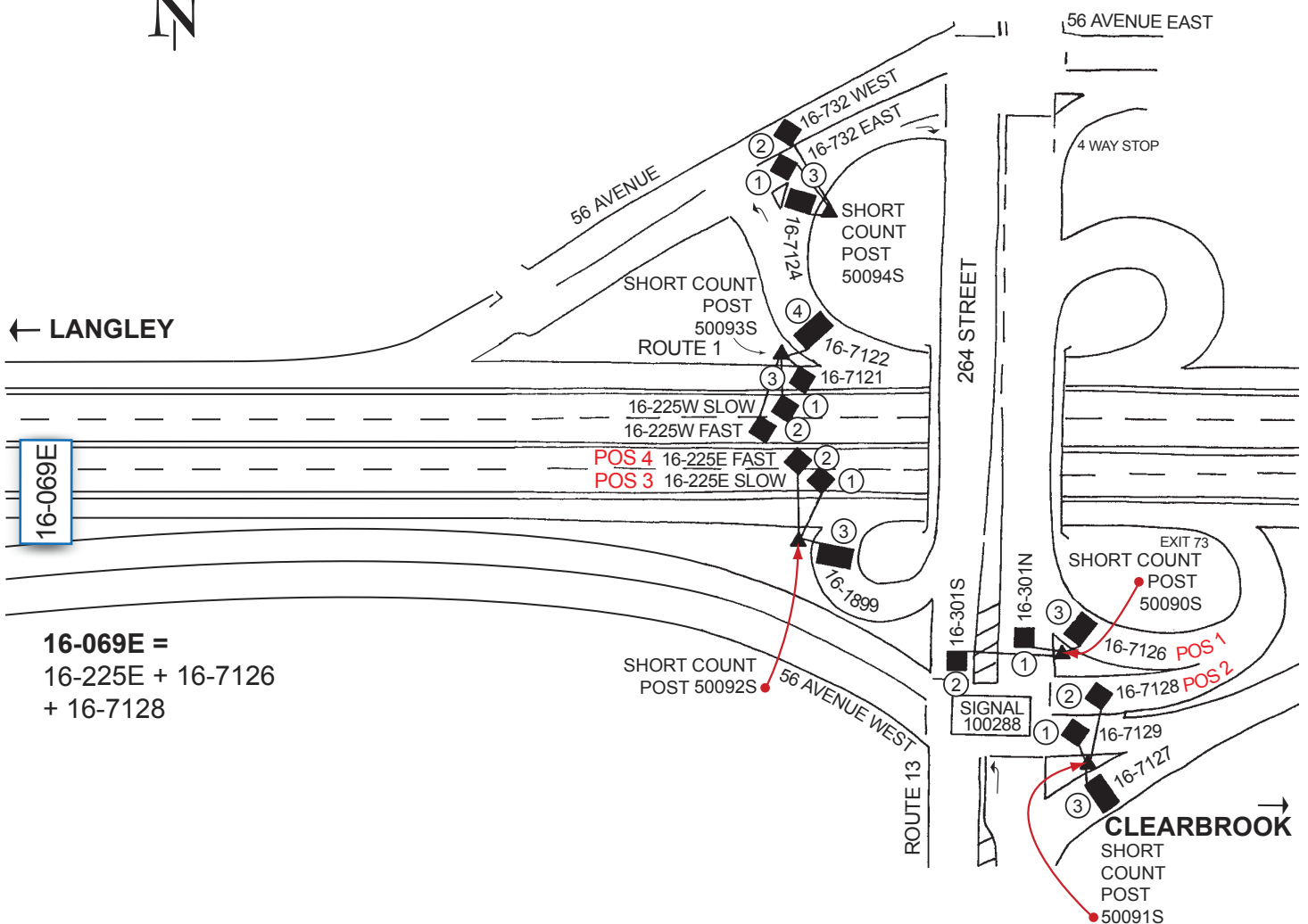
A - Detectors

PHOTOLOG

YEAR: 1999
 HIGHWAY: H1
 IMAGE NUMBER: 21690
 SHOWS LOOPS:
 YES NO

GPS: N 49.0995 W -122.4926

± 200 metres



16-069E =
 16-225E + 16-7126
 + 16-7128

NOT TO SCALE

Construction Maintenance Branch
 TrafficDataProgram@gov.bc.ca

Revised Date: August / 2007
 Version 2-B