

TM Site:

Description:

16-063E

ROUTE 1, 0.5 KM EAST OF 176 STREET, SURREY (COMPOSITE 176 STREET I/C)

16-063W

ROUTE 1, 0.5 KM EAST OF 176 STREET, SURREY (COMPOSITE 176 STREET I/C)

Station: 50030S

50031S

Survey: 5003

▲ - Short Count Post

□ - TRADAS Traffic Measurement Site

■ - Loops

① - Channels

■ - Junction Box

A - Detectors

PHOTOLOG

YEAR: 1999

HIGHWAY: H1

IMAGE NUMBER: 20357

SHOWS LOOPS:

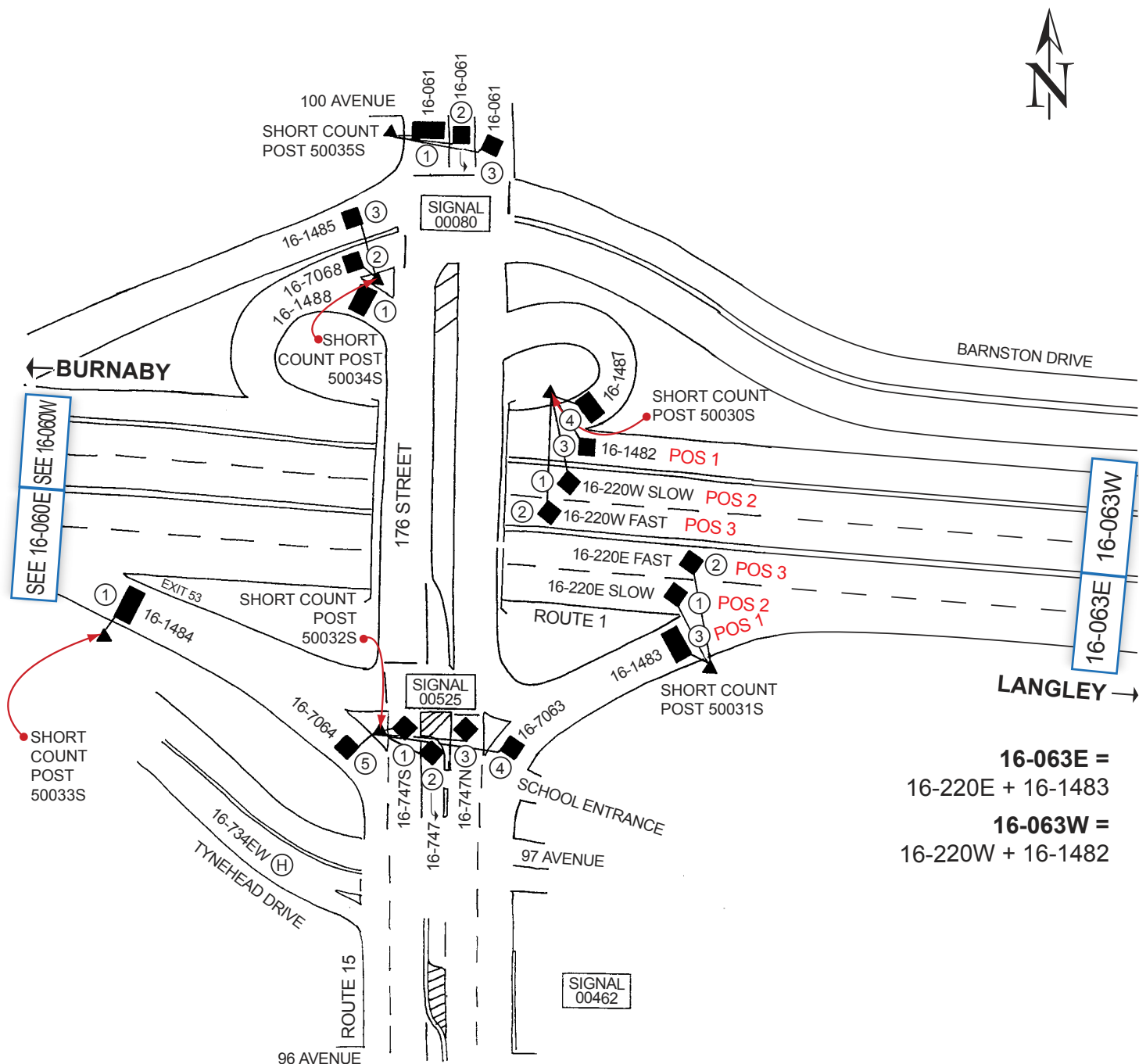
YES

NO

GPS: N 49.1816

W -122.7339

± 200 metres



NOT TO SCALE